

**MTTP Antibody (C-term)**  
**Affinity Purified Rabbit Polyclonal Antibody (Pab)**  
**Catalog # AP9069b****Specification**

---

**MTTP Antibody (C-term) - Product Information**

Application	IHC-P, WB,E
Primary Accession	<a href="#">P55157</a>
Reactivity	Human
Host	Rabbit
Clonality	Polyclonal
Isotype	Rabbit IgG
Calculated MW	99351
Antigen Region	816-842

**MTTP Antibody (C-term) - Additional Information****Gene ID** 4547**Other Names**

Microsomal triglyceride transfer protein large subunit, MTTP, MTP

**Target/Specificity**

This MTTP antibody is generated from rabbits immunized with a KLH conjugated synthetic peptide between 816-842 amino acids from the C-terminal region of human MTTP.

**Dilution**

IHC-P~~1:10~50

WB~~1:1000

E~~Use at an assay dependent concentration.

**Format**

Purified polyclonal antibody supplied in PBS with 0.09% (W/V) sodium azide. This antibody is purified through a protein A column, followed by peptide affinity purification.

**Storage**

Maintain refrigerated at 2-8°C for up to 2 weeks. For long term storage store at -20°C in small aliquots to prevent freeze-thaw cycles.

**Precautions**

MTTP Antibody (C-term) is for research use only and not for use in diagnostic or therapeutic procedures.

**MTTP Antibody (C-term) - Protein Information****Name** MTTP**Synonyms** MTP

**Function** Catalyzes the transport of triglyceride, cholesteryl ester, and phospholipid between phospholipid surfaces (PubMed:[15897609](#), PubMed:[16478722](#), PubMed:[22236406](#), PubMed:[23475612](#), PubMed:[25108285](#), PubMed:[26224785](#), PubMed:[8876250](#), PubMed:[8939939](#)). Required for the assembly and secretion of plasma lipoproteins that contain apolipoprotein B (PubMed:[16478722](#), PubMed:[23475612](#), PubMed:[26224785](#), PubMed:[8876250](#), PubMed:[8939939](#)). May be involved in regulating cholesteryl ester biosynthesis in cells that produce lipoproteins (By similarity).

#### Cellular Location

Endoplasmic reticulum. Golgi apparatus. Note=Colocalizes with P4HB/PDI in the endoplasmic reticulum (PubMed:[23475612](#), PubMed:[26224785](#))

#### Tissue Location

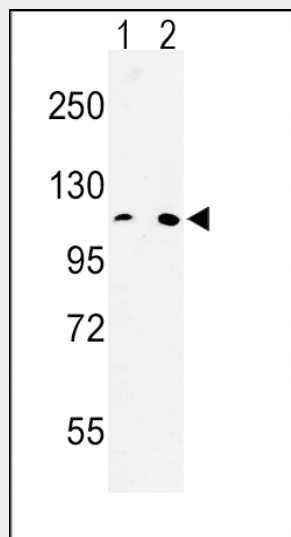
Liver and small intestine. Also found in ovary, testis and kidney.

### MTTP Antibody (C-term) - Protocols

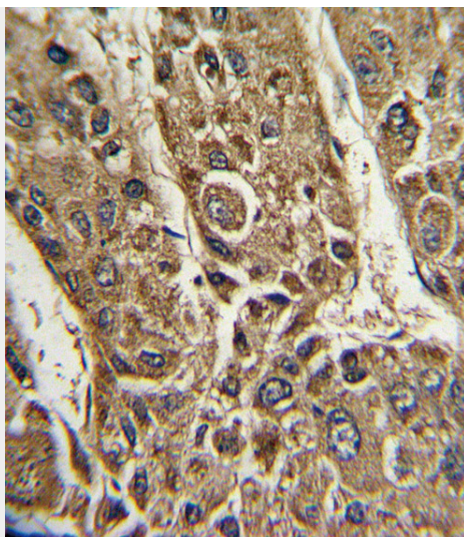
Provided below are standard protocols that you may find useful for product applications.

- [Western Blot](#)
- [Blocking Peptides](#)
- [Dot Blot](#)
- [Immunohistochemistry](#)
- [Immunofluorescence](#)
- [Immunoprecipitation](#)
- [Flow Cytometry](#)
- [Cell Culture](#)

### MTTP Antibody (C-term) - Images



Western blot analysis of MTTP Antibody (C-term) (Cat. #AP9069b) in HeLa(lane 1), 293(lane 2) cell line lysates (35ug/lane). MTTP (arrow) was detected using the purified Pab.



Formalin-fixed and paraffin-embedded human hepatocarcinoma with MTTP Antibody (C-term), which was peroxidase-conjugated to the secondary antibody, followed by DAB staining. This data demonstrates the use of this antibody for immunohistochemistry; clinical relevance has not been evaluated.

#### **MTTP Antibody (C-term) - Background**

MTTP encodes the large subunit of the heterodimeric microsomal triglyceride transfer protein. Protein disulfide isomerase (PDI) completes the heterodimeric microsomal triglyceride transfer protein, which has been shown to play a central role in lipoprotein assembly. Mutations in MTP can cause abetalipoproteinemia.

#### **MTTP Antibody (C-term) - References**

Dai,K., et.al., Arterioscler. Thromb. Vasc. Biol. 30 (3), 568-574 (2010)  
Oliveira,C.P., et.al., J. Gastroenterol. Hepatol. 25 (2), 357-361 (2010)